

Air Diesel

FL913 SERIES

38-114 Hp



Deutz Model		F3L913	F4L913	F6L913
Engine Type		Air Cooled, Direct Injected, 4 Cycle, Integrated Cooling System		
No. of Cylinders		3	4	6
Bore/Stroke	inches(mm)	4.02 / 4.92 (102 / 125)		
Displacement	Cubic In.(liter)	187 (3.1)	249 (4.1)	374 (6.1)
Aspiration		natural	natural	natural
Power Ratings				
Intermittent Duty HP (KW)	1500 RPM	38 (28)	52 (38)	79 (58)
	1800 RPM	46 (34)	63 (46)	94 (69)
	2000 RPM	50 (37)	68 (50)	103 (76)
	2300 RPM	55 (41)	76 (56)	114 (84)
Continuous Duty HP (KW)	1500 RPM	36 (27)	50 (37)	75 (55)
	1800 RPM	43 (32)	58 (43)	88 (65)
	2000 RPM	47 (35)	65 (48)	98 (72)
	2300 RPM	53 (39)	72 (53)	107 (79)
* Gen-drive Standby Duty HP (KW)	1500 RPM	39 (29)	52 (39)	79 (59)
	1800 RPM	47 (35)	63 (46.5)	96 (71)
* Ratings include parasitic load of cooling fan, air cleaner, muffler, alternator idling				
Max. torque	ft/lbs. (Nm)	147 (200)	193 (263)	290 (394)
RPM @ max torque		1500	1500	1500
Fuel Consumption	lbs/hphr (g/kwh)	.354 (216)	.354 (216)	.355 (216.5)
Weight includes cooling system		609 lbs.	675 lbs.	946 lbs.

The values given in this data sheet are for information purposes only and are not guaranteed.

- **Reliability** - Dependable power no matter how harsh the environment. Direct air cooling, with no coolant to freeze or boil, reduces the likelihood of engine failure even in extreme temperatures.
- **Durability** - Advanced manufacturing processes, years of research and development and high standards for quality control assure your engine will keep running tomorrow.
- **Fuel Economy** - Advanced fuel system design and reduced power requirements for cooling make Deutz Air cooled diesels a leader in fuel economy.
- **Easy Maintenance** - No coolant, radiator and water pumps to maintain. Individual cylinders and parts interchangeability within engine series, reduce inventory and service costs.



Air Diesel

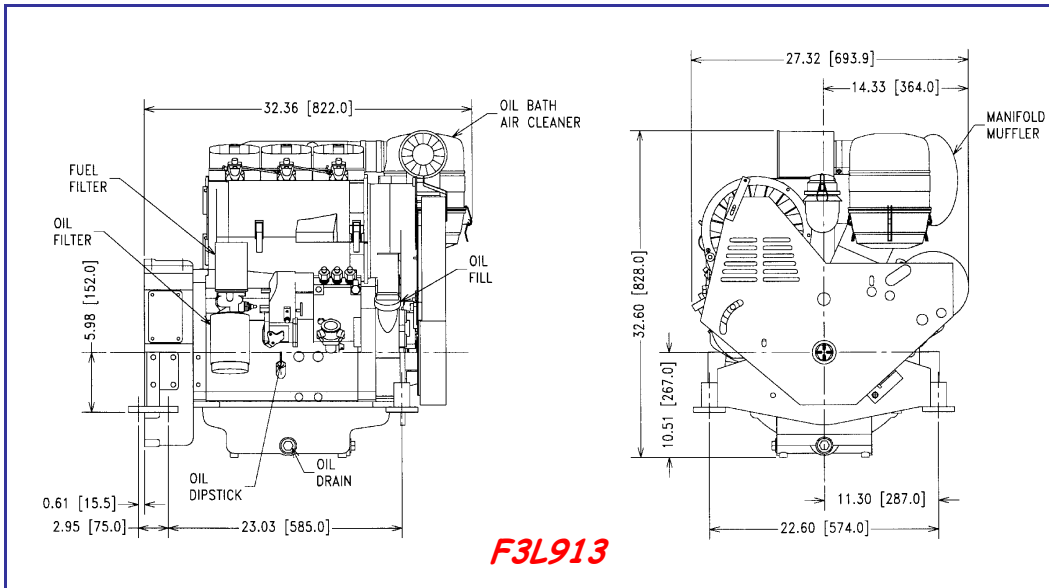
***THE
LEGEND
LIVES***

BASIC EQUIPMENT

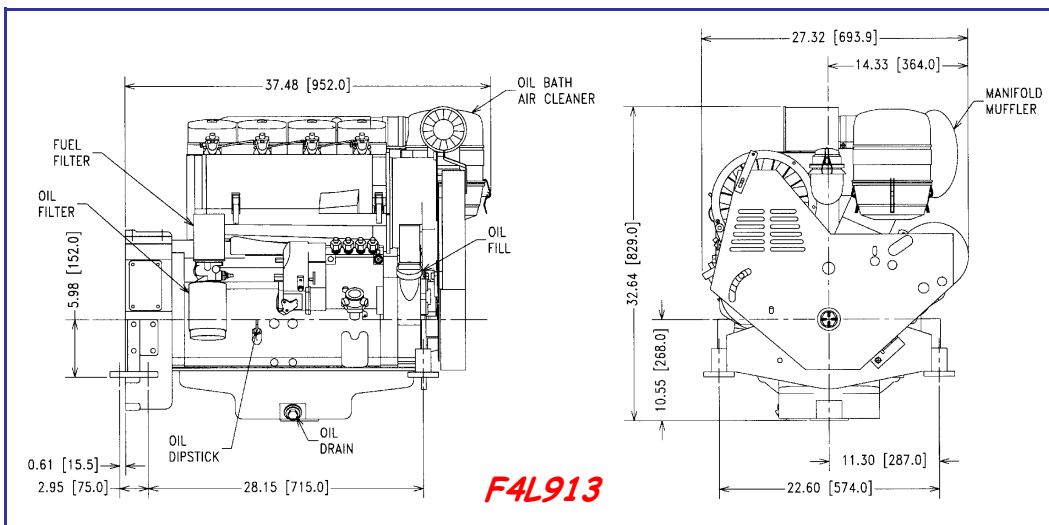
- Adapter Housing
- Flywheel
- Rigid Mounting Feet
- O.B. Air Cleaner
- Spin-on Oil & Fuel Filters
- Fuel pump
- 12V. Starter
- 12V. Alternator
- V-belt Guard
- Throttle Lever
- Manifold Muffler
- V-belt break Switch
- Wiring Harness

OPTIONAL EQUIPMENT

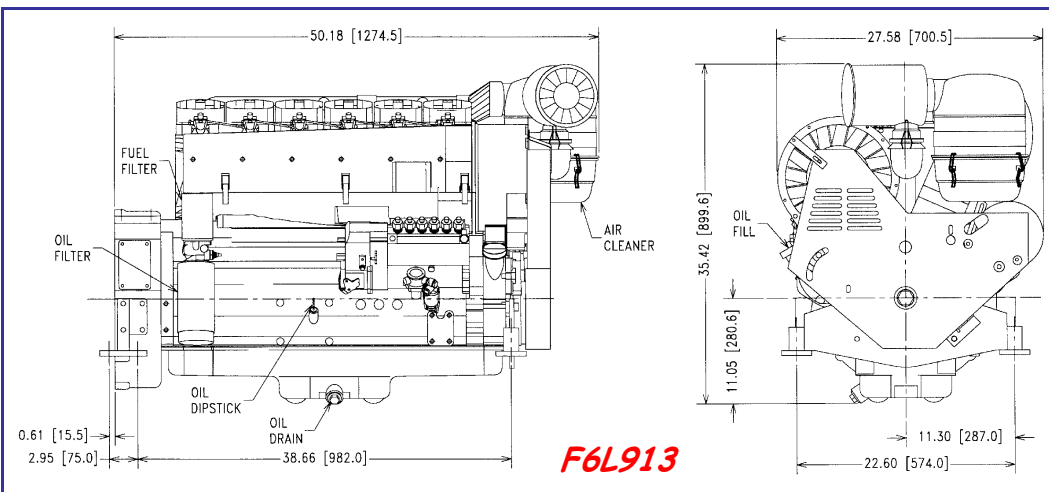
- Air Cleaners
- Precleaners
- Engine Flex Mounts
- Instrument Panels
- Starting Aids
- PTO Clutches
- PTO Stubshafts
- Shutdown devices



F3L913



F4L913



F6L913

EPA Certified. Clean Air Diesel.

NEW! Deutz Engines now covered by 3-Year Limited Warranty.