

Air Diesel

BFL913 SERIES



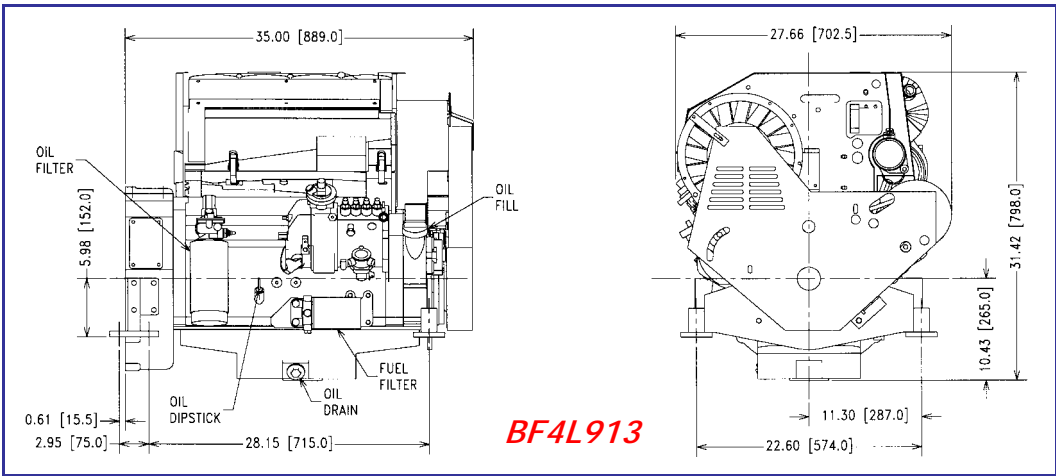
Turbo

70-180 Hp

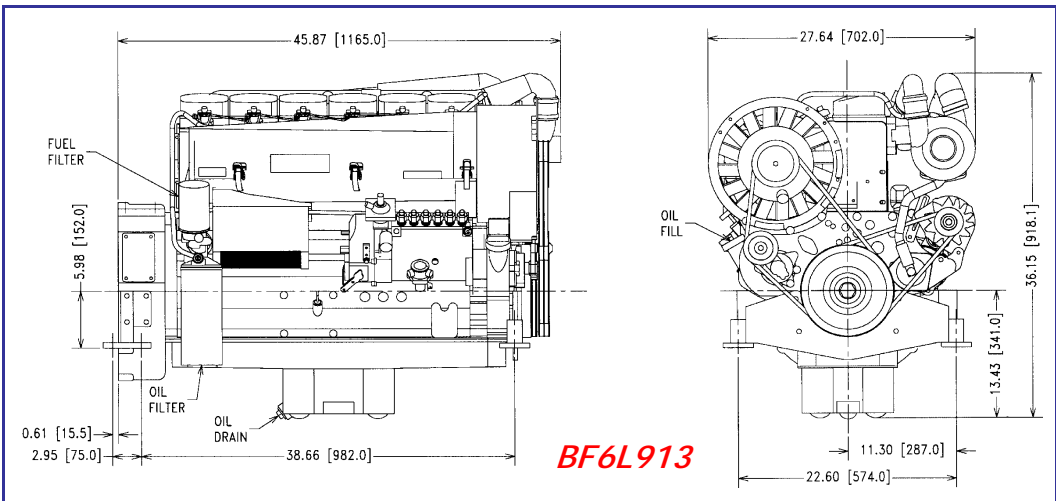
Deutz Model		BF4L913	BF6L913	BF6L913C
Engine Type		Air Cooled, Direct Injected, 4 Cycle, Integrated Cooling System		
No. of Cylinders		4	6	6
Bore/Stroke	inches(mm)	4.02 / 4.92 (102 / 125)		
Displacement	Cubic In.(liter)	249 (4.1)	374 (6.1)	374 (6.1)
Aspiration		turbo	turbo	turbo/aftercooled
Power Ratings				
Intermittent Duty HP (KW)	1500 RPM	70 (53)	103 (77)	122 (90)
	1800 RPM	83 (61)	125 (92)	151 (111)
	2000 RPM	91 (67)	137 (101)	165 (121)
	2300 RPM	100 (74)	152 (112)	180 (132)
Continuous Duty HP (KW)	1500 RPM	66 (49)	100 (74)	115 (85)
	1800 RPM	79 (58)	120 (88)	143 (105)
	2000 RPM	87 (64)	130 (96)	155 (114)
	2300 RPM	94 (69)	141 (104)	170 (125)
* Gen-drive Standby Duty HP (KW)	1500 RPM	79 (59)	124 (92)	160 (119)
	1800 RPM	95 (70)	153 (113)	195 (144)
* Ratings include parasitic load of cooling fan, air cleaner, muffler, alternator idling				
Max. torque	ft/lbs. (Nm)	261 (354)	398 (540)	511 (694)
RPM @ max torque		1600	1600	1600
Fuel Consumption	lbs/hphr (g/kwh)	.367 (223)	.366 (223)	.341 (208)
Weight includes cooling system		770 lbs.	1067 lbs.	1122 lbs.

The values given in this data sheet are for information purposes only and are not guaranteed.

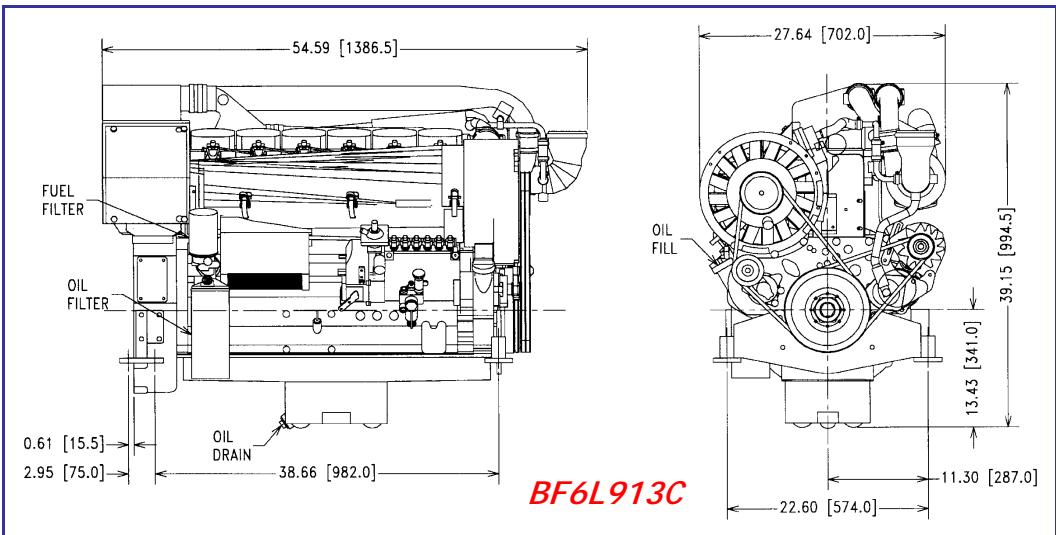
- **Reliability** - Dependable power no matter how harsh the environment. Direct air cooling, with no coolant to freeze or boil, reduces the likelihood of engine failure even in extreme temperatures.
- **Durability** - Advanced manufacturing processes, years of research and development and high standards for quality control assure your engine will keep running tomorrow.
- **Fuel Economy** - Advanced fuel system design and reduced power requirements for cooling make Deutz Air cooled diesels a leader in fuel economy.
- **Easy Maintenance** - No coolant, radiator and water pumps to maintain. Individual cylinders and parts interchangeability within engine series, reduce inventory and service costs.



BF4L913



BF6L913



BF6L913C



THE LEGEND LIVES

BASIC EQUIPMENT

- Adapter Housing
- Flywheel
- Rigid Mounting Feet
- O.B. Air Cleaner
- Spin-on Oil & Fuel Filters
- Fuel pump
- 12V. Starter
- 12V. Alternator
- V-belt Guard
- V-belt break Switch
- Wiring Harness

OPTIONAL EQUIPMENT

- Air Cleaners
- Precleaners
- Engine Flex Mounts
- Instrument Panels
- Starting Aids
- PTO Clutches
- PTO Stubshafts
- Shutdown devices

EPA Certified. Clean Air Diesel.

NEW! Deutz Engines now covered by 3-Year Limited Warranty.