



B/FL2011 SERIES

16-79 Hp



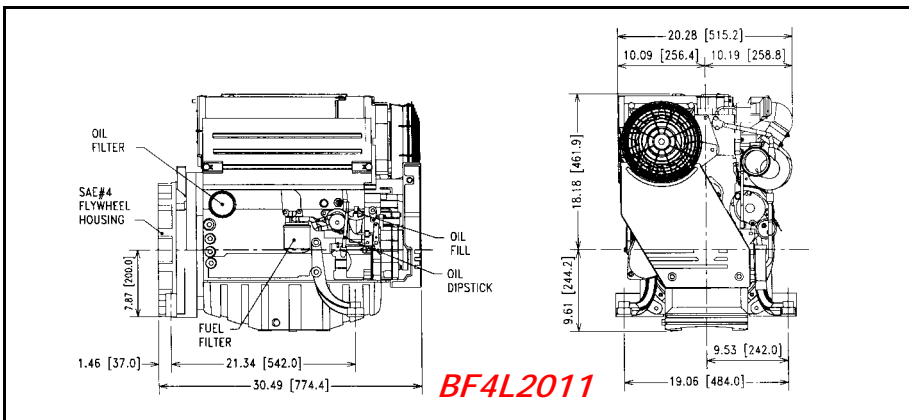
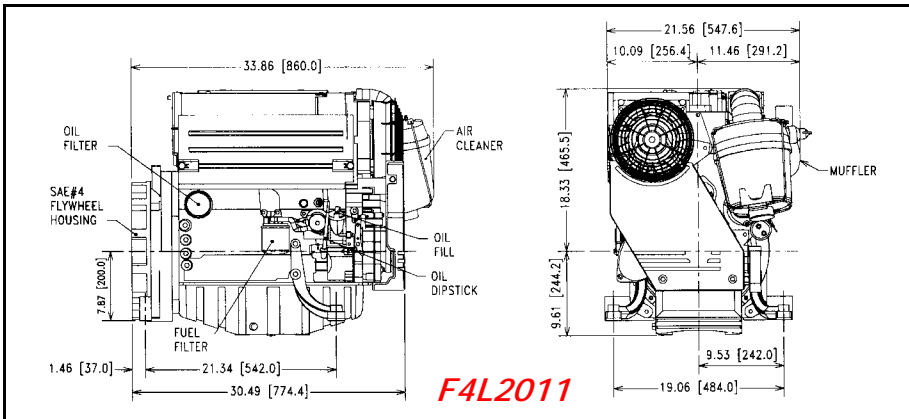
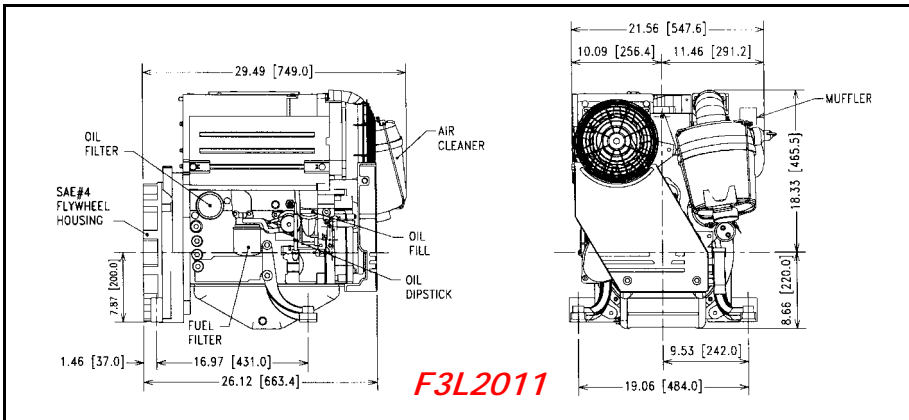
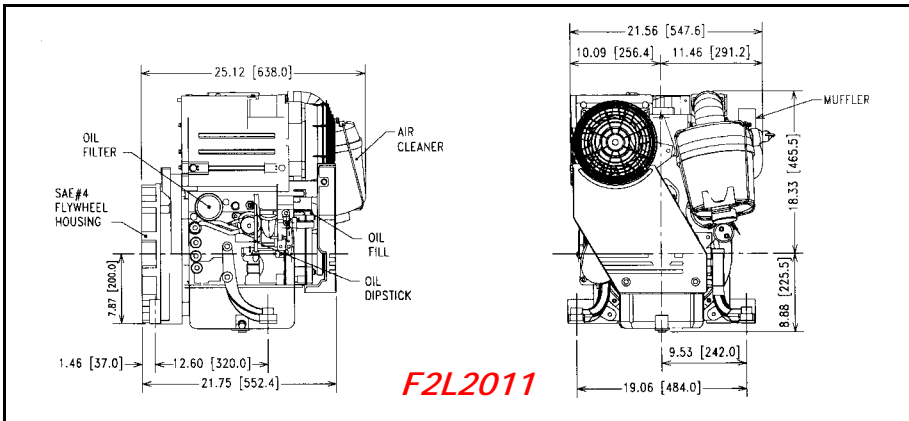
Deutz Model		F2L2011	F3L2011	F4L2011	BF4L2011
Engine Type		Air/Oil Cooled, Direct Injected, 4 Cycle Diesel, Integrated Cooling System			
No. of Cylinders		2	3	4	4
Bore/Stroke	inches(mm)	3.7 / 4.4 (94 / 112)			
Displacement	Cubic In.(liter)	95 (1.55)	142 (2.33)	190 (3.11)	190 (3.11)
Aspiration		natural	natural	natural	Turbocharged
Power Ratings - EPA & CARB Certified					
I Automotive and II Light Duty Intermittent Rating HP	2000 RPM	24	40	50	61
	2300 RPM	27	42	57	68
	2500 RPM	29	46	60	72
	2800 RPM	31	48.5	65	79
III Heavy Duty and IV Continuous Rating HP	1500 RPM	16	25	34	44
	1800 RPM	21	32	43	55
	2000 RPM	23	35	47	58
	2300 RPM	26	40	54	64
	2500 RPM	27	42	57	69
	2800 RPM	30.5	46	61	75
* Gen-drive HP (KWm)	Standby Duty 1800 RPM	22 (16.4)	33 (24.6)	46 (34.3)	61 (45.5)
	Continuous Duty 1800 RPM	21 (15.7)	32 (23.9)	43 (32.1)	55 (41)
* Ratings include parasitic load of cooling fan, air cleaner, muffler, alternator idling					
Max. torque	ft/lbs. (Nm)	66 (89)	101 (137)	140 (190)	170 (230)
RPM @ max torque		1700	1700	1700	1600
Fuel Consumption	lbs/hphr (g/kwh)	.364 (221)	.361 (219)	.351 (213)	.355 (204)
Power Unit Weight		487 lbs.	562 lbs.	628 lbs.	617 lbs.

The values given in this data sheet are for information purposes only and are not guaranteed.

2011 Benefits:

- **Low Noise Emissions**, no expensive insulation measures for noise reduction.
- **Long Maintenance Intervals**, *1,000 hr. oil change interval & low fuel consumption allow savings in operating costs.
- **Low Installation Costs**. Compact-Integrated installation-friendly package.
- **Service and User Friendly**. Reduced routine maintenance requirements.
- **Oil cooling**, eliminates corrosion & cavitation. High reliability & low maintenance.

* Oil change interval varies depending on duty cycle.



BASIC EQUIPMENT

- SAE 4 Adapter Housing
- SAE 8/10 Flywheel
- Rigid Mounting Feet
- Dry-Type Air Cleaner w/ service indicator
- Spin-on Oil & Fuel Filters
- 12V. Shutdown Solenoid
- 12V. Starter
- 12V. Alternator
- V-belt Guard
- Manifold Muffler on Non-turbocharged Models
- Wiring Harness

OPTIONAL EQUIPMENT

- Engine Flex Mounts
- Instrument Panels
- Starting Aids
- PTO Clutches
- PTO Stubshafts

EPA Certified. Clean Air Diesel.
NEW! Deutz Engines now covered by 3-Year Limited Warranty.